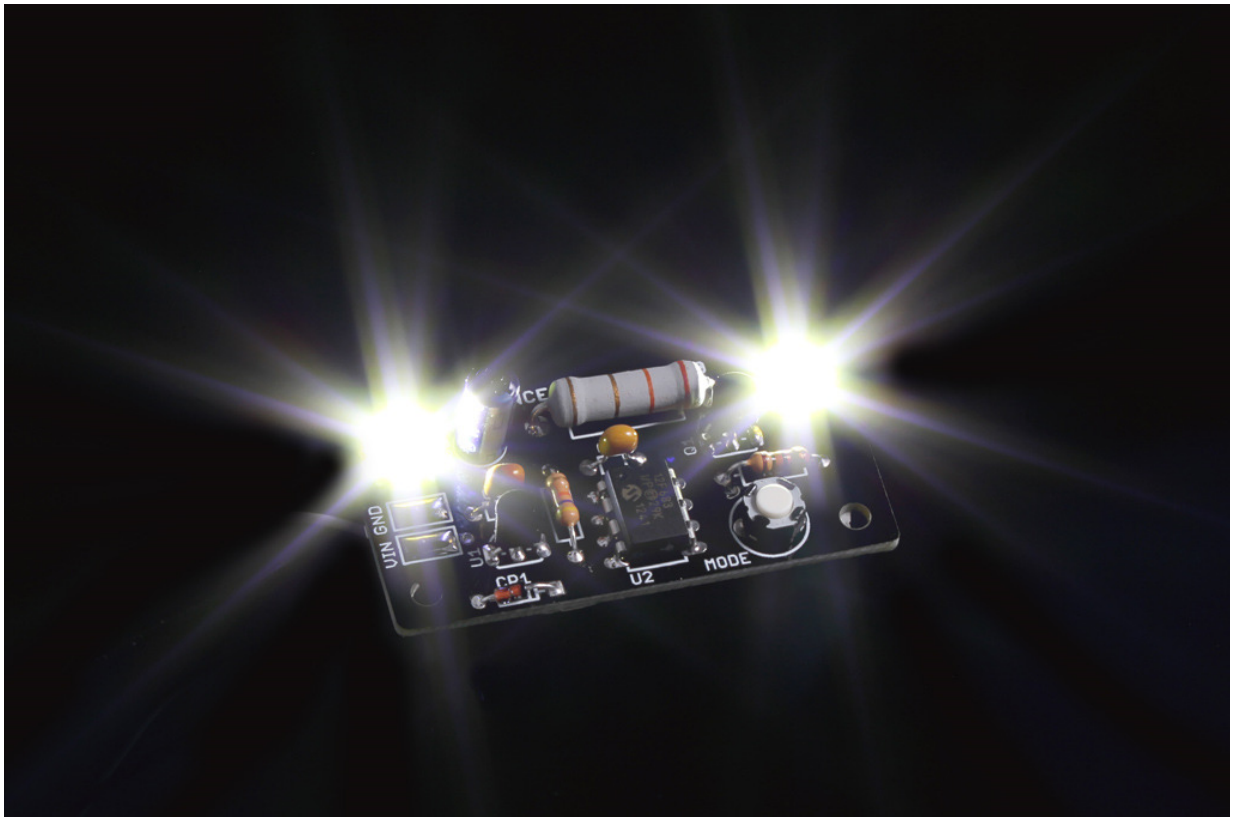
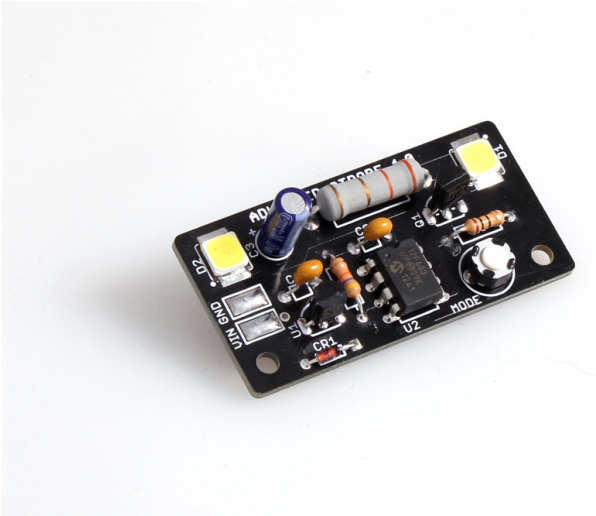


Advanced Strobe 1.0



Instruction Manual

Eastern Voltage Research, LLC



Introduction to the Advanced Strobe 1.0 Kit

Thank you for purchasing the Advanced Strobe 1.0 Kit. If you are looking for a high power LED strobe kit that will knock the socks off your family and friends, this is it. Unlike other advertised LED strobe kits that electronic kit manufacturers offer which are usually based of small low power white T-1 LEDs, this kit utilizes two (2) high power CREE X-Lamp white LEDs which are **BLINDINGLY** bright! This strobe kit will outshine and out flash any other amateur strobe electronic kit on the market.

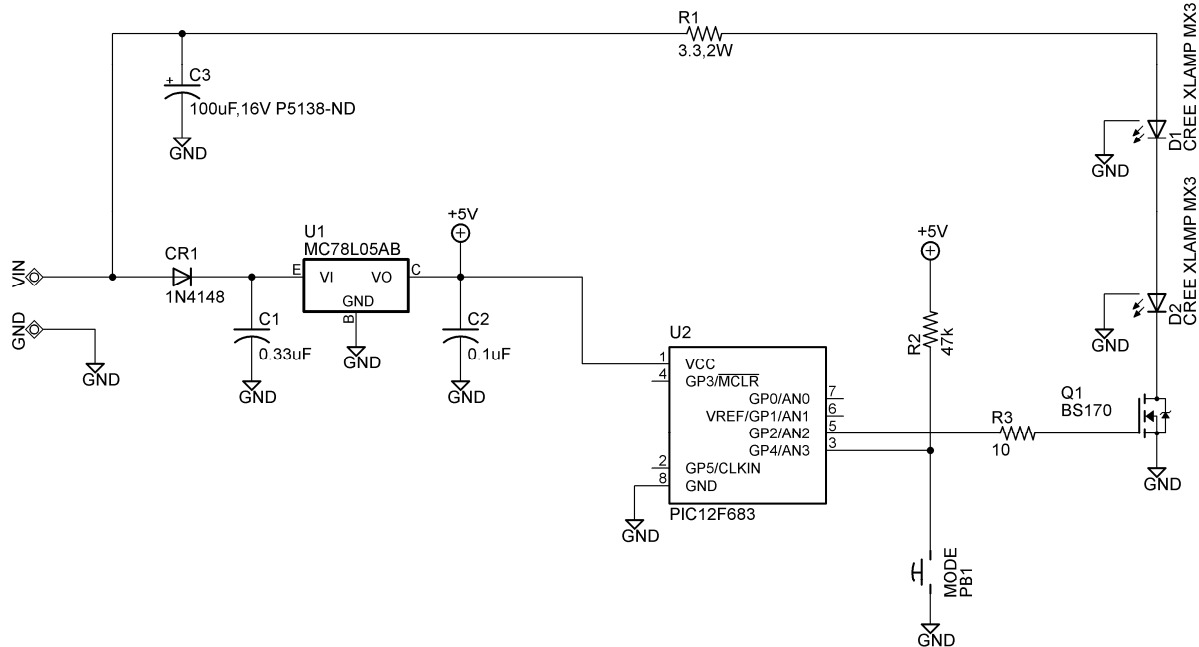
The Advanced Strobe 1.0 kit utilizes two (2) CREE high power X-Lamp LEDs which are controlled via a PIC microcontroller. An onboard pushbutton allows the user to cycle through various modes of operation as well as vary the flashrate of the strobes.

The last thing to say is that this kit is not a toy. The LEDs produce extremely bright flashes of light that must be used with caution.

Notice to Beginners: If you are a first time kit builder, you may find this instruction manual easier to understand than expected. Each component in this kit has an individual check box, while a detailed description of each component is provided as well. If you follow each step in the instruction manual in order, and practice good soldering and kit building skills, the kit is next to fail-safe.



Please read this manual in its entirety before building, testing, or operating your kit!



Circuit Description

The Advanced Strobe 1.0 utilizes two (2) CREE high power X-Lamp LEDs, D1 and D2, which are controlled via a PIC12F683 microcontroller, U2. The output signal of the PIC12F683 drives a MOSFET transistor, Q1, which controls the current flowing through LEDs, D1 and D2. Diode CR1 provides reverse voltage protection against incorrectly connected batteries and power supplies while the MC78L05AB voltage regulator, U1, provides a regulated 5VDC voltage for the microcontroller, U2. The 100uF, 16V capacitor, C3 provides an energy storage reservoir for the LEDs, D1 and D2, as batteries cannot generally deliver the instantaneous power that the LEDs require operating in this strobe type mode.

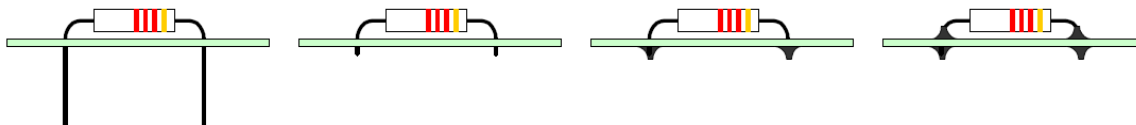
Finally, pushbutton, PB1, allows the user to cycle through the various modes of operation as well as control the flashrate of the strobe circuit.

Kit Building Tips

A good soldering technique is key! Let your soldering iron tip gently heat both the wires and pads simultaneously. Apply solder to the wire and the pad when the pad is hot enough to melt the solder. The finished joint should appear like a small shiny drop of water on paper, somewhat soaked in. If the pads have not heated up sufficiently, melted solder (heated only by the soldering iron itself) will form a cold solder joint and will not conduct properly. These cold joints appear as dull beads of solder, and can be easily fixed by applying additional heat to the pad and wire. All components, unless otherwise noted, should be mounted on the top side of the board. This is the side with the silkscreen printing.

When installing components, the component is placed flat to the board and the leads are bent on the backside of the board to prevent the part from falling out before soldering. The part is then soldered securely to the board, and the remaining lead length is clipped off. It is also extremely important to place the components as close to the board as possible. This is necessary for proper operation over the wide frequency range of the various kits we provide. Also be sure that component lead lengths are always as short as possible. This will avoid adding any stray capacitances or inductances that can be detrimental to circuit operation.

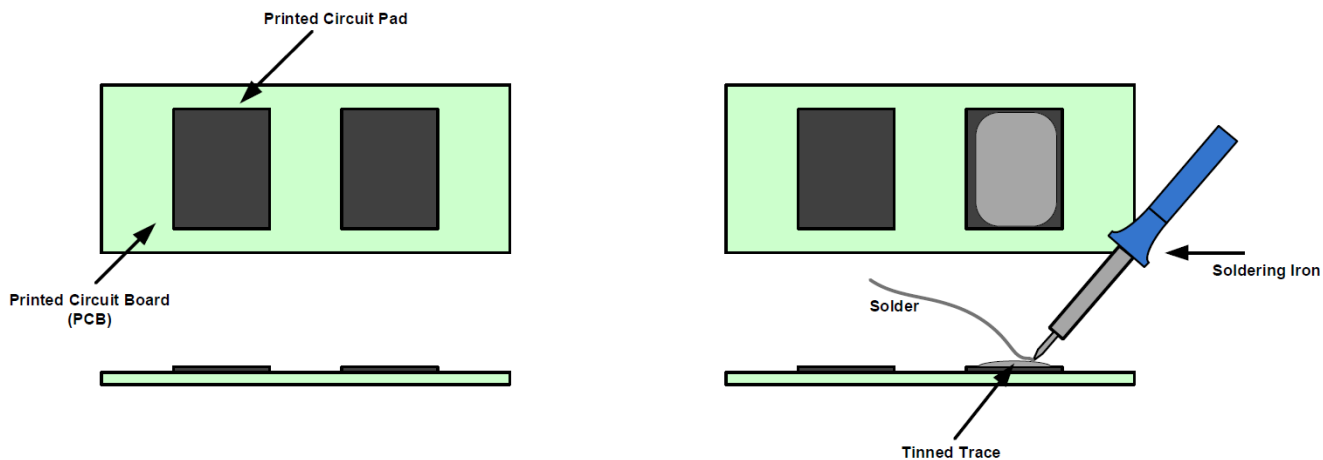
An alternative approach (which is actually the one I use) is to install the component into the board and then apply a piece of masking tape on the topside to hold the component in place temporarily. The leads on the backside of the board are then trimmed leaving about 0.10" lead protruding through the backside of the board, and then soldered from the backside. You can then remove the masking tape, and finally apply a small amount of solder on the top to complete the joint on both sides. This is shown in the figure below.



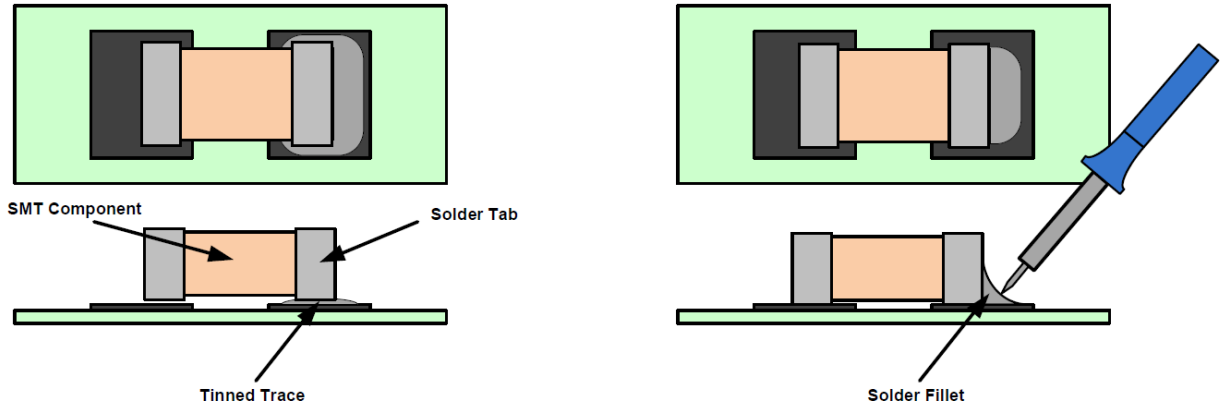
Surface Mount (SMT) Component Soldering Instructions

One of the first things you'll notice with your electronics kit is that many of the included components are surface mount components. These components do not have conventional leads, as is the case with thru-hole components, and instead solder directly to pads located either on the top or bottom of the PCB board.

One of the first things to remember when soldering surface mount (SMT) components to the board is that patience is a must! The first step when soldering a SMT component to the board, after properly identifying both the component and the location where it will be installed on the PCB board, is to slightly "tin" one of the pads on the PCB board that will connect to the component. This is accomplished by simply applying a very small amount of solder directly to the pad with the soldering iron as shown below.



The next step is to pick up and hold the component in place on its tinned pad using tweezers. While holding the component in place with tweezers, briefly re-heat the solder with the soldering iron so that it flows onto the component solder tab and forms a nicely shaped solder fillet. For the remaining solder tabs on the same component, briefly heat up the component tab using the soldering iron and apply a small amount of solder directly to the pad, again creating a nicely shaped solder fillet. It is important to note that when reheating the solder, the soldering iron tip should contact the solder tab of the body of the component and not the solder directly. This will allow the solder to flow as efficiently as possible and form a proper solder fillet.



At first, surface mount soldering may seem a bit difficult, but its actually much easier than thru-hole soldering once you get the hang of it. Good luck and take your time!

Advanced Strobe 1.0 Kit Parts List

RESISTORS

- 1 3.3, 2W Resistor (orange-orange-gold), R1
- 1 47k Resistor (yellow-violet-orange), R2
- 1 10 ohm Resistor (brown-black-black), R3

CAPACITORS

- 1 0.33uF Capacitor, C1
- 1 0.1uF Capacitor, C2
- 1 100uF, 16V Electrolytic Capacitor, C3

DIODES

- 1 1N4148 Diode, CR1
- 2 LED, CREE X-Lamp, White, D1,D2

SEMICONDUCTORS

- 1 MC78L05AB Voltage Regulator, U1
- 1 PIC12F683 Microcontroller, U2
- 1 BS170 MOSFET, Q1

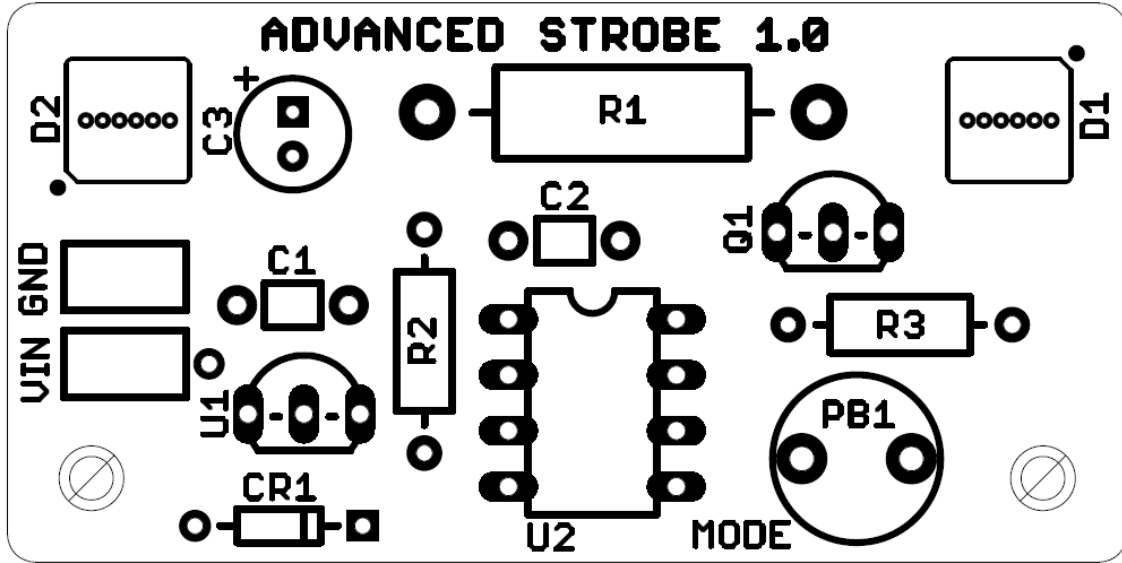
MISCELLANEOUS

- 1 Pushbutton, PB1
- 1 9V Battery Connector
- 1 DIP Socket, 8-Pin

REQUIRED, NOT SUPPLIED

- 1 9V Battery or 9-12V DC Power Supply

Advanced Strobe 1.0 - Component Layout Diagram



KIT Building Instructions

Now we will begin building the kit. There are just a few more important things to know before we install the first components.

For each component, the word “install” always means the following:

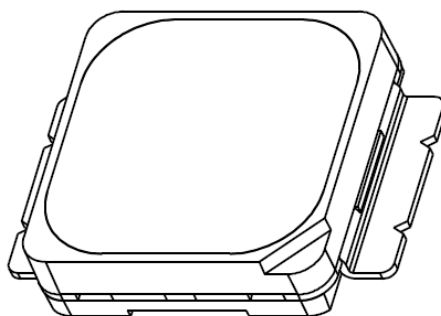
1. Pick the correct value to start with.
2. Insert the component into the correct printed circuit board (PCB) location.
3. Orient the component correctly – especially when there is a right and a wrong way to solder it in. (i.e. Electrolytic capacitors, diodes, ICs, transistors, etc...)
4. Solder all connections unless directed otherwise. Ensure enough heat is used to allow solder to flow for clean, shiny, and completed connections.

Also, please be sure to take us seriously when we say that good soldering is the key to the proper operation of your circuit!

- Use a 25W soldering pencil with a clean, sharp tip. **DO NOT USE** a high power soldering gun such as those trigger activated units.
- Use only rosin core solder intended for electronics use
- Ensure your work area is clean, and has plenty of bright lighting
- Build your kit in stages, taking breaks to check your work. Be sure to clean the board periodically with a brush or compressed air to remove any excess wire cuttings, etc...

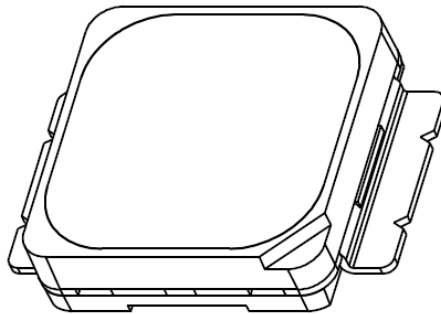
Okay, so lets begin!

1. Install D1, Cree X-Lamp LED. The LEDs have polarity and should be installed so that the cathode end of the LED is pointing towards the silkscreen DOT on the board. The cathode end of the LED is indicated by a notch in the corner of the LED as shown in the figure below.



Place the LED on the board with the notch oriented toward the silkscreen DOT on the board.

- 2. Install D2, Cree X-Lamp LED. The LEDs have polarity and should be installed so that the cathode end of the LED is pointing towards the silkscreen DOT on the board. The cathode end of the LED is indicated by a notch in the corner of the LED as shown in the figure below.



Place the LED on the board with the notch oriented toward the silkscreen DOT on the board.

- 3. Install R1, 3.3, 2W resistor (orange-orange-gold)
- 4. Install R2, 47k resistor (yellow-violet-orange)
- 5. Install R3, 10 ohm resistor (brown-black-black)
- 6. Install CR1, 1N4148 diode. The cathode band on the diode must match that shown on the silkscreen.
- 7. Install C1, 0.33uF capacitor (marking BC334 or 334 or similar)
- 8. Install C2, 0.1uF capacitor (marking BC104 or 104 or similar)

- 9. Install C3, 100uF, 16V electrolytic capacitor. C3 has “polarity.” Polarity means the capacitor must be inserted a certain way. You may notice that one side of the capacitor, there is a black stripe with minus signs. This is the negative end. Looking at the PCB silkscreen, you will notice the positive side marked. Install this capacitor into the board ensuring the positive side of the capacitor installs in the hole that is marked positive on the PCB layout.

- 10. Install U1, MC78L05AB voltage regulator (marked MC78L05AB) This IC needs to be orientated properly. Please insert U1 into the board with the flat edge of the IC orientated according to the silkscreen layout drawing.

- 11. Install an 8-pin DIP socket into the U2 location. Note that one end of the DIP socket is marked by a notch; this end **MUST** be oriented as shown on the PCB layout. **DO NOT INSTALL PIC12F683 at this time!**

- 12. Install Q1, BS170 MOSFET transistor (marked BS170) This transistor needs to be orientated properly. Please insert U1 into the board with the flat edge of the transistor orientated according to the silkscreen layout drawing.

- 13. Install pushbutton, PB1.

- 14. Install the 9V battery connector to the PCB board. The red wire connects to the terminal pad labeled VIN on the PCB while the black wire connects to the terminal pad labeled GND.

Congratulations! You have just completed your Advanced Strobe 1.0 kit. Please take a few moments to look over the board and ensure that all the components are installed properly with the correct orientation. Since some of the parts may be unfamiliar to you, you may want to be extra sure that they have been inserted correctly. After you are sure that everything seems to be properly installed, move on to the set-up and testing section.

Set-up and Testing

Okay, so lets begin!

- 1. Install a 9V battery into the battery connector, or connect a 7-12VDC power supply to the proper terminals ensuring proper polarity is observed.
- 2. Using a multimeter, verify that there is 5VDC at pin 1, of U2. This will ensure that the onboard 5V regulator, U1, is connected and working properly. If the voltage is not 5V, you will need to determine why U1 is not working before continuing on.
- 3. Disconnect the 9V battery or 7-12VDC power supply.
- 4. Install the programmed PIC12F683 microcontroller into the U2 location. Note that one end of the PIC12F683 is marked by a notch; this end **MUST** be oriented as shown on the PCB layout.
- 5. Reconnect the 9V battery or 7-12VDC power source.
- 6. The unit will start-up in the OFF mode. Press the pushbutton two times to enter an operational mode. Continuing by pressing the pushbutton once will cycle to the next mode of operation. To turn off, either disconnect the battery, or cycle through the modes until the unit turns OFF.

Congratulations! Your Advanced Strobe 1.0 is now completed and operational.

Selecting Modes

Pressing the pushbutton once and releasing will advanced the Advanced Flame 1.0 to the next mode of operation. One mode is the OFF state. To turn OFF the Advanced Flame 1.0, either cycle the modes until the OFF mode is selected or remove the 9V battery or power supply from the board.

Troubleshooting

PROBLEM: The LEDs do not illuminate.

SOLUTION: Verify that the LEDs and U1 are installed correctly, the battery is installed correctly, and the battery is not completely drained.



Conclusion

We sincerely hope that you have enjoyed the construction of this Eastern Voltage Research Kit. As always, we have tried to write this instruction manual in the easiest, most “user friendly” format that is possible. As our customers, we value your opinions, comments, and additions that you would like to see in future publications. Please submit comments or ideas to:

Eastern Voltage Research, LLC

Technical Support
support@easternvoltage.com

Thanks again from the people here at Eastern Voltage Research.

Terms and Conditions of Sale

Before opening or assembling your kit, please read and review the latest Terms and Conditions of Sale on our website at the following link:

<http://www.easternvoltage.com/terms.html>